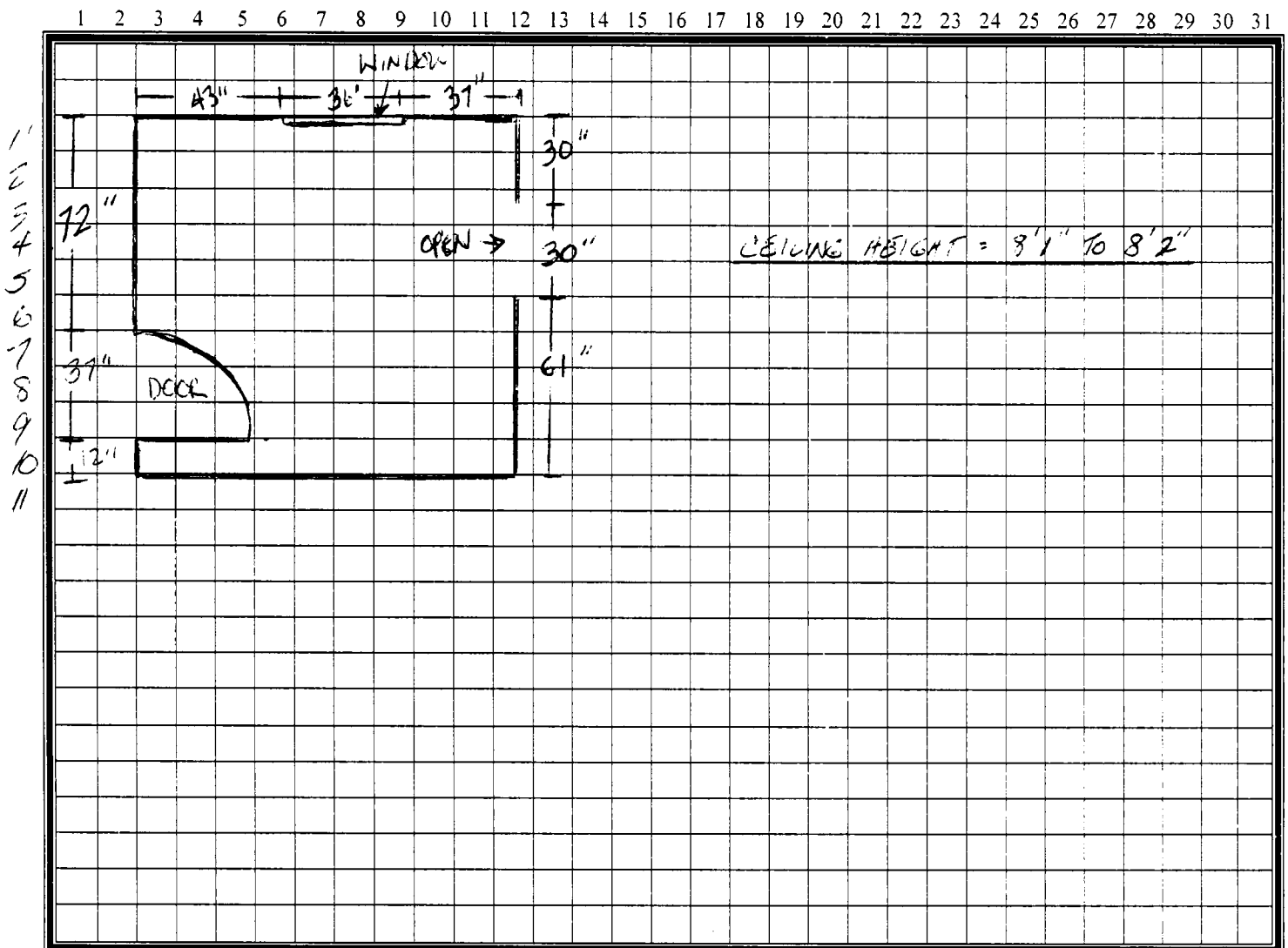


# NEW CABINETS

## STEP ONE: WALLS, DOORS & WINDOWS; HEIGHT

- A. GET A TAPE MEASURE, PIECE OF PAPER AND A RULER.
- B. MEASURE ALL OF THE INSIDE WALLS – USUALLY THERE ARE 3 OR 4 WALLS.
- C. MEASURE EACH DOOR OPENING WIDTH. INCLUDE DOOR FRAME IN WIDTH.
- D. MEASURE THE WINDOW WIDTHS. INCLUDE WINDOW FRAME IN WIDTH.
- E. MEASURE THE DISTANCE FROM EACH CORNER TO THE START OF EACH DOOR AND EACH WINDOW.
- F. DRAW HOW EACH DOOR OPENS (DOOR-LESS OPENINGS: IGNORE THIS STEP).
- G. MEASURE THE FLOOR TO CEILING HEIGHT IN SEVERAL SPOTS WHERE THE CABINETS WILL BE LOCATED. WE NEED TO KNOW THE MINIMUM CLEARANCE.
- H. MAKE SURE YOUR DRAWING IS TO SCALE. YOU CAN PRINT “GRANITE ESTIMATOR” FOR AN APPROXIMATE  $\frac{1}{4}'' = 1'$  SCALE GRID TO HELP YOU WITH THIS.

WHEN YOU'RE DONE, YOUR DRAWING WILL LOOK SOMETHING LIKE THIS:



# NEW CABINETS

## STEP TWO: PLUMBING, VENTS, GAS & ELECTRIC

- LOCATE ALL OF THESE ALONG THE WALLS.
- MEASURE THE DISTANCE FROM THE CENTERLINE OF EACH ITEM TO THE CORNER OF THE NEAREST WALL.
- ADD THE NUMBER OF INCHES FROM THE FLOOR TO THE CENTER OF EACH ITEM.
- IDENTIFY THEM USING THIS CODE:

SP = SINK PLUMBING	SG = STOVE GAS	GDE = GARBAGE DISP. ELEC.
DWP = DISHWASHER PLUMBING	CTG = COOK TOP GAS	CTE = COOK TOP ELECTRIC
RP = REFRIGERATOR PLUMBING	OG = BUILT-IN OVEN GAS	ME = MICROWAVE ELECTRIC
RE = REFRIGERATOR ELECTRIC	OE = BUILT-IN OVEN ELECTRIC	HE = (EXHAUST) HOOD ELEC.

- MEASURE THE DISTANCE FROM THE NEAREST CORNER TO THE CENTER OF THE STOVE EXHAUST VENT ("SEV"), WHICH NORMALLY IS IN THE CEILING ABOVE TO STOVE.

WHEN YOU'RE DONE. YOUR DRAWING WILL LOOK SOMETHING LIKE THIS:

